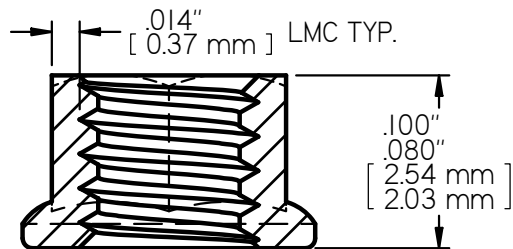
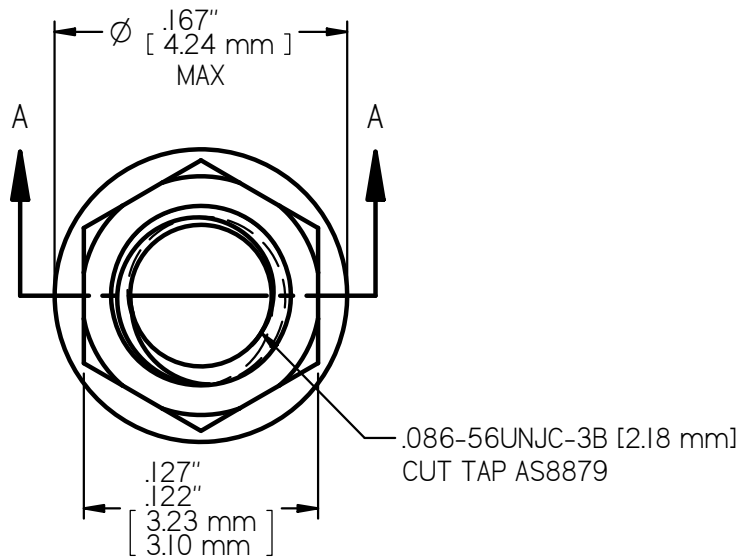


LEAST MATERIAL CONDITION

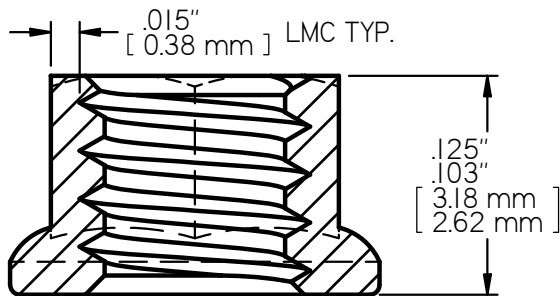
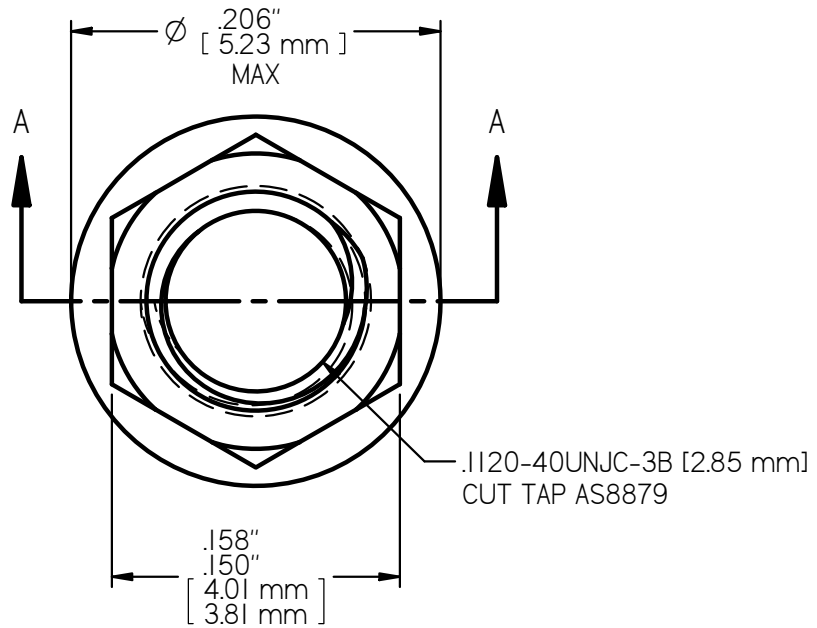


SECTION A-A

10X SCALE

MS21043-02 LOCK NUT
AXIAL STRENGTH: 465 LBS. [2,068 N.] MIN

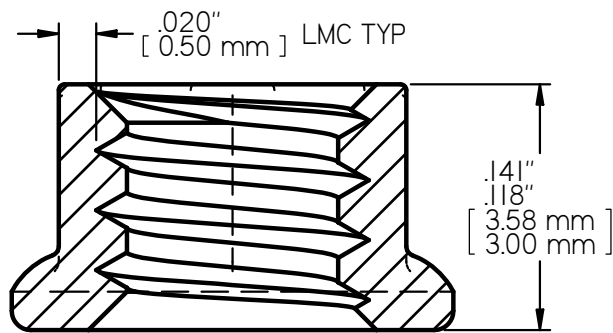
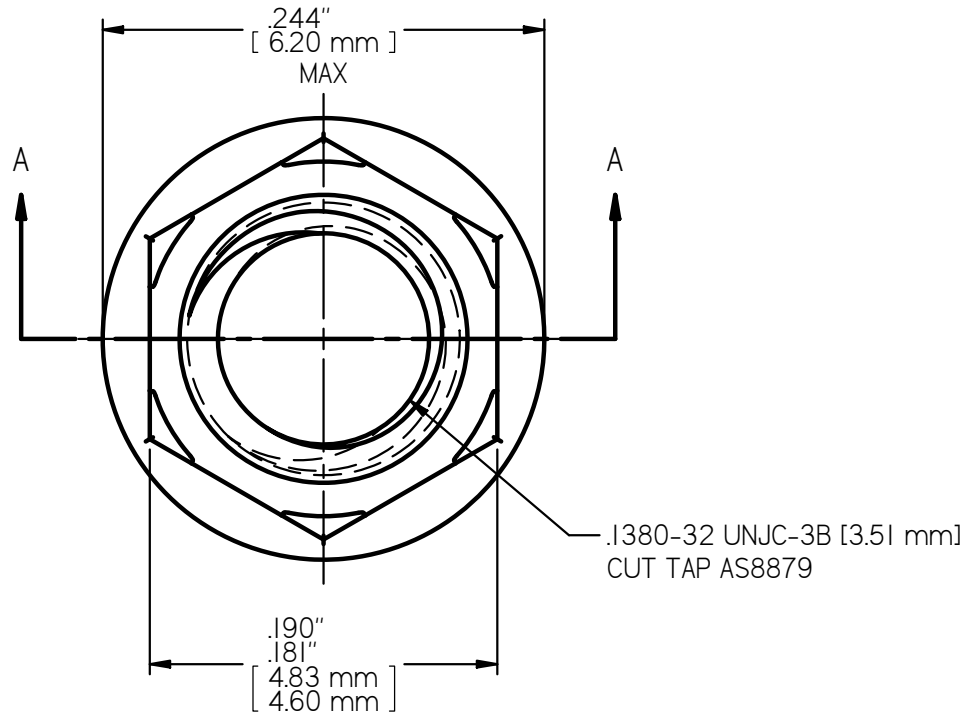
LEAST MATERIAL CONDITION



SECTION A-A
10X SCALE

MS21043-04 LOCK NUT
AXIAL STRENGTH: 760 LBS. [3,381 N.] MIN

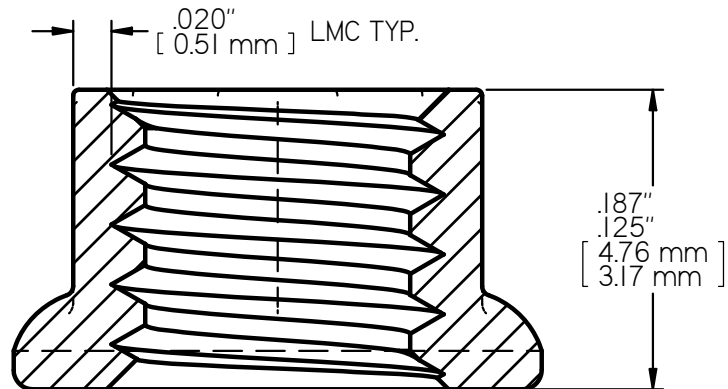
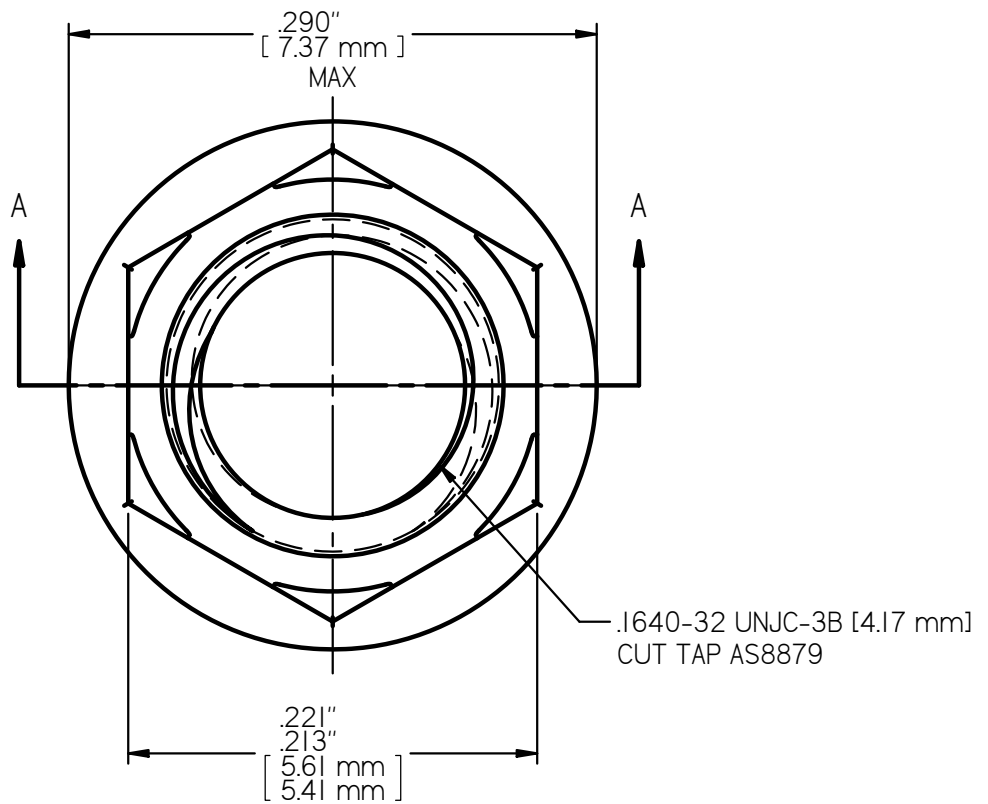
LEAST MATERIAL CONDITION



SECTION A-A
10X SCALE

MS21043-06 LOCK NUT
AXIAL STRENGTH: 1,150 LBS. [$5,115 \text{ N.}$] MIN

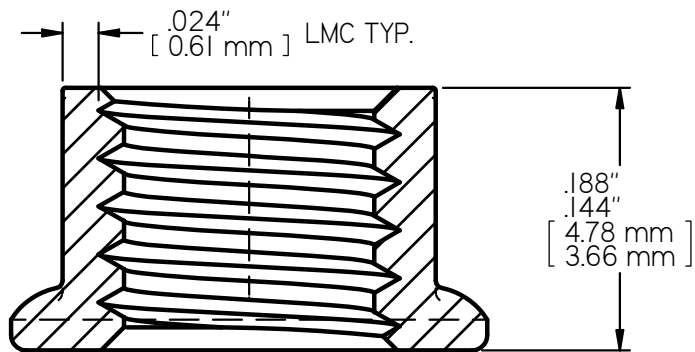
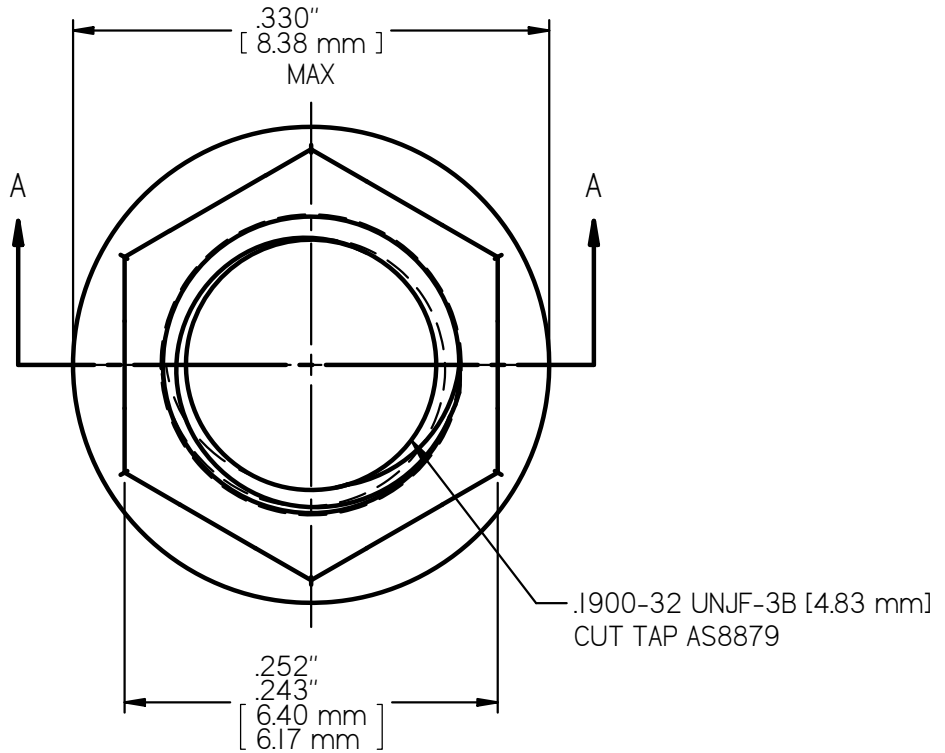
LEAST MATERIAL CONDITION



SECTION A-A
10X SCALE

MS21043-08 LOCK NUT
AXIAL STRENGTH: 1,720 LBS. [7,651 N.] MIN

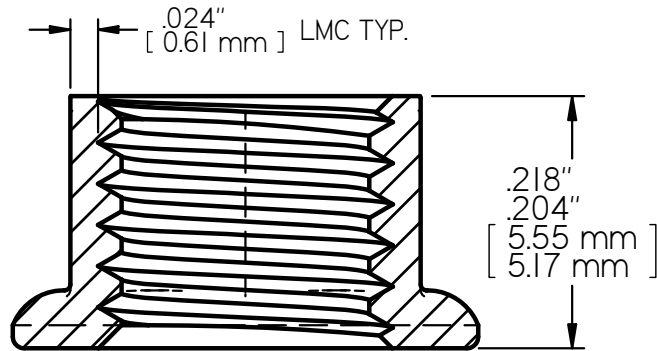
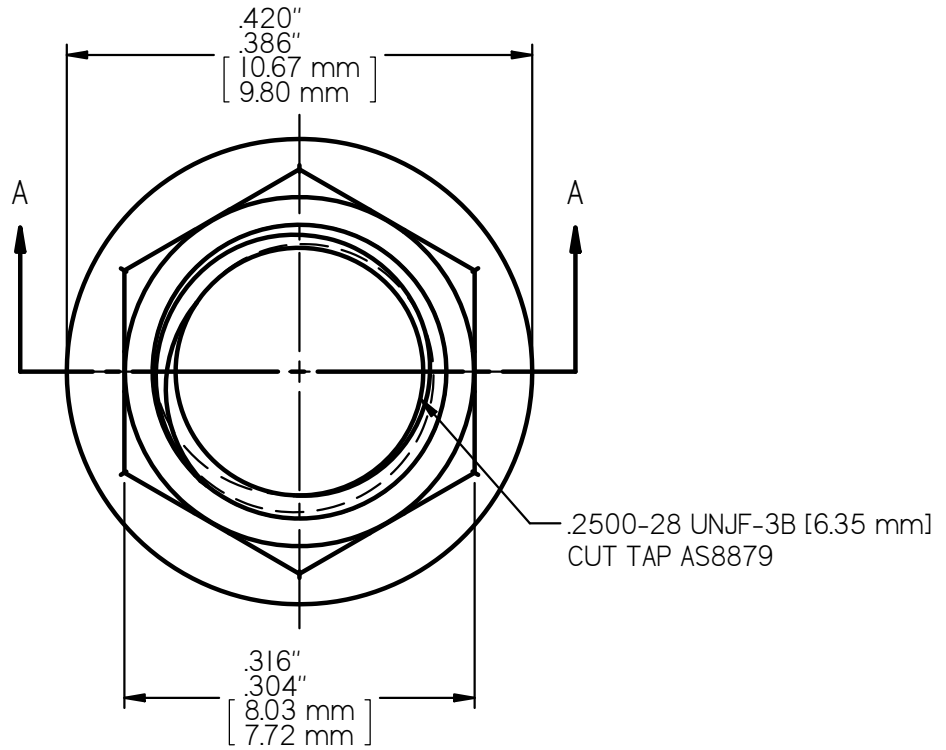
LEAST MATERIAL CONDITION



SECTION A-A
8X SCALE

MS21043-3 LOCK NUT
AXIAL STRENGTH: 2,460 LBS. [10,943 N.] MIN

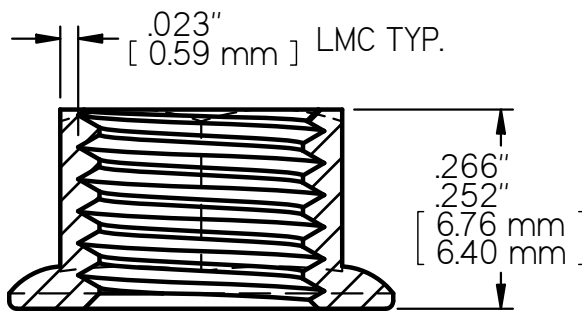
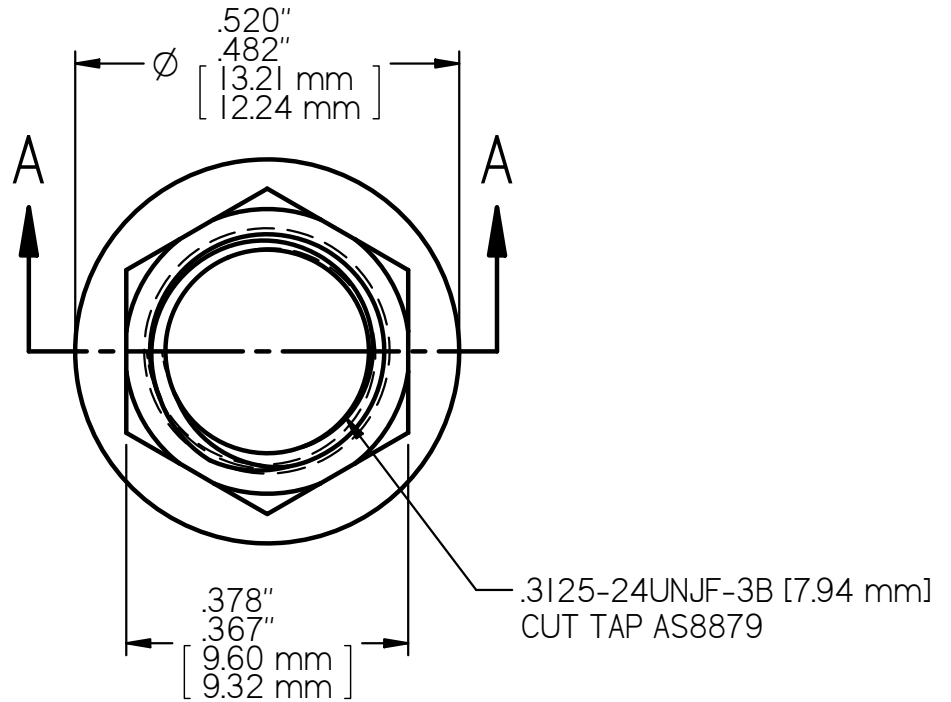
LEAST MATERIAL CONDITION



SECTION A-A
6X SCALE

MS21043-4 LOCK NUT
AXIAL STRENGTH: 4,580 LBS. [20,373 N.] MIN

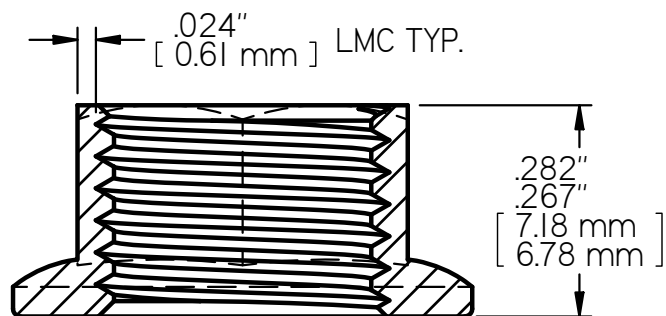
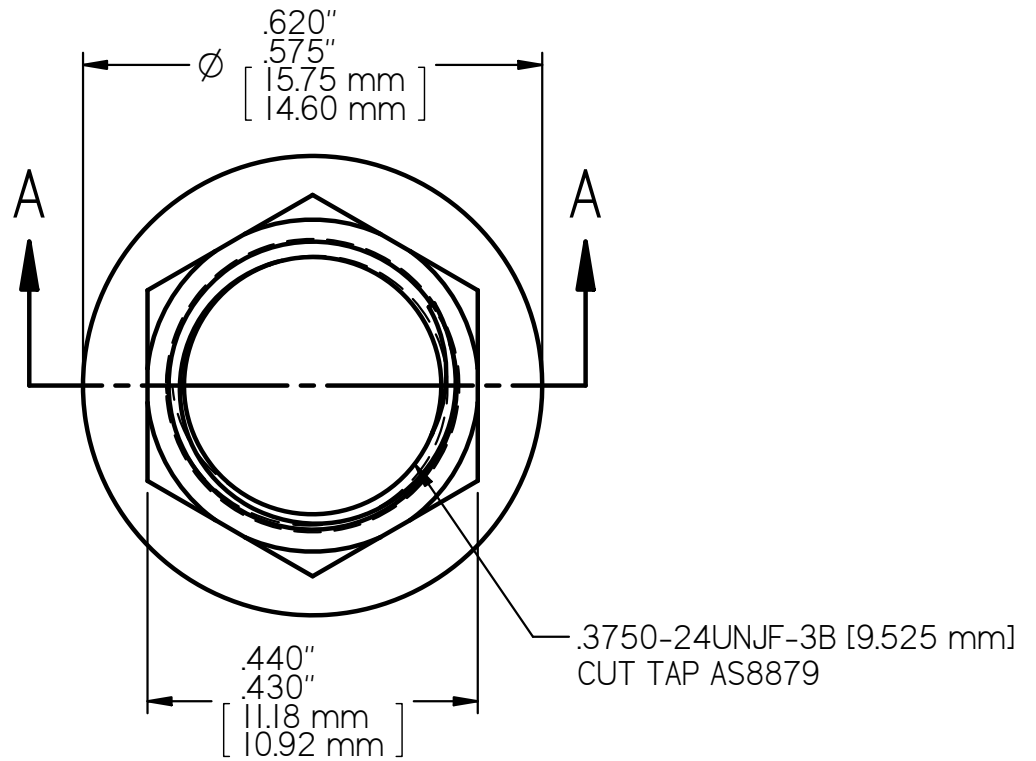
LEAST MATERIAL CONDITION



SECTION A-A
4X SCALE

MS21043-5 LOCK NUT
AXIAL STRENGTH: 7,390 LBS. [32,872 N.] MIN

LEAST MATERIAL CONDITION



SECTION A-A
4X SCALE

MS21043-6 LOCK NUT
AXIAL STRENGTH: 11,450 LBS. [50,932 N.] MIN